

1862



Industrial Handheld RFID Reader

With the rising trend of RFID technology driven by applications such as asset management and item level tagging in Warehousing, Distribution Center and Retailing industries. CipherLab thoughtfully developed the 1862 to help enterprises smoothly adopt the RFID technology into the existing operations. CipherLab's 1862 provides strong RFID reader options to extend RFID reading and writing capabilities. Combining with versatile pairing that is compatible with existing mobile devices, users can simultaneously handle both RFID and barcode applications seamlessly.



UHF RFID

1.5M
MULTIPLE
DROPS

IP64

1,000
TUMBLES
AT 1M



BT4.0
CONNECTION

1862

Handheld RFID Reader



Smooth Operation with Strong RFID Technology

CipherLab's 1862 RFID handheld reader is carefully crafted to integrate RFID technology into your operation easily. Along with up to 5 m RFID reading range and *Bluetooth*® pairing versatility to existing mobile devices, the 1862 also comes equipped with powerful software utilities for easy configuration and customization for user friendliness. More than just these advantages, its IP64 rugged design and custom mounts for different mobile devices also provide non-stop productivity and effortless one hand operation to produce results with comfort.



High Performance Independent RFID Reader

The 1862 is a device to make RFID data collections easy and efficient. 1862 has a long reading range from near contact to as far as 5 m (16.5 ft.) and write data up to 1.5 m (4.9 ft.) away. On top of that, it is able to simultaneously read manifold EPC Gen 2 (ISO 18000-6C) tags so workers can easily capture multiple data at one time. The human effort on tracking and managing every asset is therefore reduced to create maximum productivity for where RFID becomes the only feasible identification and data collection alternative.



Versatile Data Capture for Existing Mobile Devices

CipherLab's 1862 RFID handheld reader achieves versatile data collection with UHF RFID, 1D and 2D barcode capabilities. Unique from typical RFID readers, the CipherLab 1862 handheld RFID reader gives you extended RFID reading and writing capabilities via *Bluetooth*® pairing with user's existing mobile devices. The 1862 is specially equipped with *Bluetooth*® V4.0 dual mode which is growing in popularity and backward compatible with future and existing smart device. This ultimately means that there is no need for high-cost replacements.



Easy Configuration with Powerful and Value-Added Software

The CipherLab's 1862 RFID handheld reader is supplied with multiple configurators that complement business operations. It comes with EZSuite which is a comprehensive suite of intuitive software utilities including EZConfig, EZTransfer and EZEdit. EZSuite allows for simple configuration for the 1862 based on user's specific settings, such as connection interface, hot keys, tag data edit, convert and updates. Moreover, Development tools such as SDK for Windows® Mobile, Windows® CE and Android devices allow users to customize applications through various platforms.



EZConfig

The utility for tweaking the settings of the 1862 at a few clicks



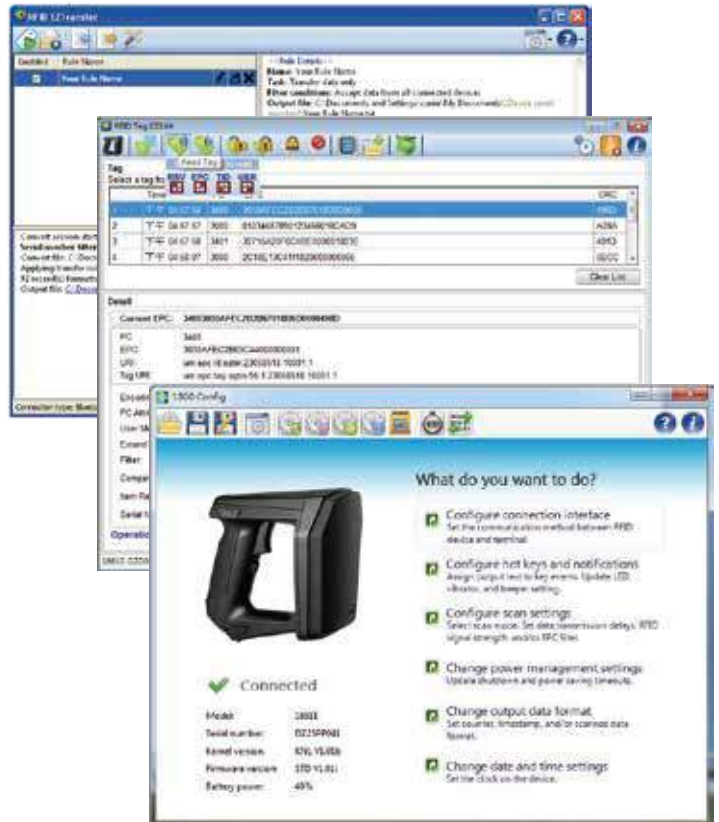
EZTransfer

To retrieve data from the 1862 to computer when 1862 is set to memory mode



EZEdit

Editing an RFID tag when using the 1862 to read and write tags



Durable Designs Producing Non-Stop Productivity with Simple Operation

Extensively tested for durability, the CipherLab 1862 handheld RFID reader is able to meet challenges from harsh environments. It is rated IP64 and able to sustain multiple drops onto concrete from 1.5 m (5 ft.) plus 1,000 tumbles at 1 m (3 ft.). It offers continuous functionality regardless of harsh conditions with dusts and humidity or accidental falls onto rough surfaces. The CipherLab 1862 handheld RFID reader further ensures continuous productivity with effortless one hand operation. Just simply snapping your mobile computers or smart devices on its custom mounts attached to the 1862 handheld RFID reader, users could enjoy hassle-free and comfortable operation via a single unit.





1862

Handheld RFID Reader



| | | 1862 |
|---------------------------------|-----------------------------------|--|
| Performance | CPU | ARM Cortex-M3 32 bit |
| | Memory | 4 MB |
| | Operating power | Rechargeable 3.7V 2500 mAh Li-ion battery |
| | Working hours ¹ | 8 hours |
| | Alert | Tri-color LEDs (red / blue / green), vibrator, beeper |
| Communication interface | WPAN | Bluetooth® V4.0 dual mode (2.1 + EDR / BLE) |
| | Bluetooth® profile | SPP Slave, Master, HID |
| | USB | Virtual COM |
| RFID data capture | Frequency | UHF : 865 ~ 868 MHz / 902 ~ 928 MHz |
| | Read / Write range ² | Up to 5 m (16.5 ft.) / Up to 1.5 m (4.9 ft.) |
| | Antenna type | Internal antenna |
| | Support tags | EPCglobal UHF Gen 2, ISO 18000-6c |
| | Max. output power ³ | 30 dBm |
| Physical characteristics | Keys | 2 function keys, 1 trigger key, 1 toggle switch |
| | Dimensions (L x W x H) | 163.5 x 85.7 x 146.5 mm |
| | Weight (w/ battery) | 520 g / 18.3 oz. |
| User environment | Operating temperature | -10 °C to 50 °C / 14 °F to 122 °F |
| | Storage temperature (w/o battery) | -30 °C to 70 °C / -22 °F to 158 °F |
| | Humidity (non-condensed) | Storage 5% to 95% / Operating 10% to 90% |
| | Impact resistance | Multiple 1.5m / 5 ft. drops onto concrete, 5 drops on each side / 1,000 tumbles at 1 m (3.3 ft.) / IP64 |
| | Electrostatic discharge | ± 15kV air discharge / ± 8kV direct discharge |
| EMC regulation | | CE, RoHS, REACH, WEEE, ErP, FCC, NCC |
| Configuration | | Can be configured through PC, Windows® mobile computers, CipherLab terminals, and a .NET SDK (CE, Mobile) via 1860 Configurator. |
| Accessories | | 3610 Bluetooth® transponder, micro USB cable, battery charger, 2 battery packs, CipherLab CP55/ CP50/ 9600/ Universal and other custom mobile computer mounts on demand. |
| Warranty | | 1 year |

1. Based on one scan per five seconds at 1-meter distance.
2. Actual read / write range is dependent upon a number of factors, including the specific tag used, nature of the items tagged, and presence or absence of radio interference.
3. Output power varies to be in line with local regulations.



ACCESSORIES



Battery Charger



CipherLab 9600 Mobile Computer Mount



CipherLab CP50 / CP55 Mobile Computer Mount



Universal Mount (clamp arm width: 35 ~ 80mm)



3610 Bluetooth® Transponder



HEADQUARTERS
CipherLab Co., Ltd.
 12F, 333 Dunhua S. Rd., Sec.2
 Taipei, Taiwan 10669
 Tel +886 2 8647 1166
 Fax +886 2 8732 3300
 www.cipherlab.com

CipherLab Electronics Trading (Shanghai) Co., Ltd.
 J Room, 4F, No.728 West Yan'an Rd.
 Changning District, Shanghai
 China 200050
 Tel +86 21 3368 0288
 Toll Free 400 920 0285
 Fax +86 21 3368 0286

CipherLab USA Inc.
 2552 Summit Avenue STE 400
 Plano, Texas, USA 75074
 Tel +1 469 241 9779
 Toll Free 888 300 9779
 Fax +1 469 241 0697

CipherLab Europe
 Flight Forum 40,
 5657 DB Eindhoven,
 The Netherlands
 Tel + 31 (0) 40 2951510