



Powered by **memjet**

FAST • ON-DEMAND • IMPROVED WATER RESISTANT

The VP750 by VIPColor is the next generation of digital print-on-demand colour label printer with **Enhanced Water Resistance Print Technology**¹

Building on the proven technology of our bestselling VP700, it utilises Enhanced Water Resistance Print Technology¹ that produces vibrant coloured labels. The result is great looking colour labels that are suitable for Chilled Food & Beverage, Animal Care, Cleaning products, Chemicals, Pharmaceutical products and most moisture exposed products.

The VP750 combines the performance and reliability of VIPColor VP700 industrial colour label printers, with the new improved inks system that gives **better water (and many solvent) resistant labels**, compared to other dye ink printers and longer lasting printhead versus first generation of Memjet printers. Ruggedly designed yet intuitive for in-house label production and private labelling needs, the **VP750 brings fast, affordable colour printing to any print environment.**

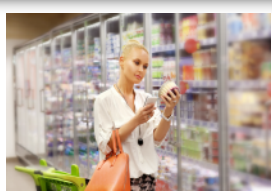


Enhanced Water Resistance Print Technology

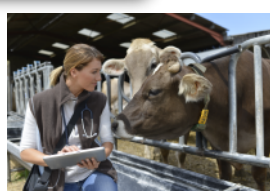
Key Benefits

- Digital colour label printer
- Up to 18 m/min print speed
- Up to 1600x1600 dpi resolution
- Ruggedized for industrial usage
- Enhanced Water Resistance Print Technology
- Longer lasting printhead

Key Markets



Refrigerated Food & Beverage



Animal Care & Veterinary products



Home Care & Cleaning products



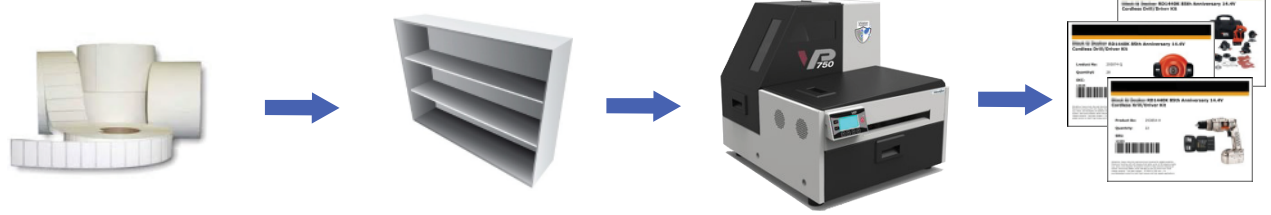
GHS & Chemical products



Pharmaceutical products, Body care & Medical Tests

Reduce the complexity, avoid obsolete labels, save time and money.

WITH VP750 LABEL PRINTER



- Order only blank label stock of different sizes.
- Receive and do minimal inspection.

- Inventoried in less storage shelf space.
- Easier to locate label stock.

- Reduces reloading of label stock and utilizes one printer only.

- Print on demand and change label design within minutes.



*For Memjet™ ink compatible label stock, we strongly recommend that the user perform a print check for compatibility before using the label stock for production, follow the recommendations from the manufacturer and the optimal printer settings. Compatible with synthetic and paper based label. However, the user is advised to conduct their own tests for compatibility prior to mass production.

Printer Specifications



PERFORMANCE

| | |
|-------------------|---|
| Print speed | Up 304,8 mm per second (18 m/minute, or 12 ips) |
| Print resolution | Up to 1600 x 1600 dpi |
| Data connectivity | USB 2.0 ; Ethernet 10/100Base-T ; GPIO |
| Ink | Enhanced Water Fast Inks in individual 250 ml CYMCK ink cartridges |
| Power supply | Universal internal power supply |
| Barcode PQ | 1D barcode at least Grade B (Code 39) with 10mils bar width 2D barcode at least Grade B (PDF417) with 10mils cell size |

MEDIA HANDLING

| | |
|------------------------|---|
| Print modes | Roll-Roll, Roll-Cut, Print & Hold (non-peel) |
| Label media width | 50,8 - 215,9 mm (2" - 8,5") |
| Max. label length | Up to 1,016 m (40") |
| Label media thickness | 0,1 - 0,3 mm |
| Supported media | Glossy , Semi-Gloss and matt inkjet coated media |
| Qualified label stocks | Please refer to media compatibility list of VIPColor printers |
| Detection | Gap, continuous, black mark |

OPERATING ENVIRONMENT

| | |
|-----------|-------------------------|
| Operation | 15 to 35°C at RH 20-80% |
| Storage | -5 to 50°C |

REGULATORY & SAFETY

| | |
|-----------------------|---|
| Standards / Approvals | CE (Europe), FCC Part 15, Subpart B, Class A (US) EC 60950-1 Compliance (International), cULus (US/Canada) |
|-----------------------|---|

USABILITY & SERVICEABILITY

| | |
|------------------------------|---|
| User interface | Embedded web server Backlit LCD control panel in 9 languages LED for printer warnings & readiness indication Unobstructed accessibility to service bays for print-head and ink tanks |
| Aesthetics | Designed for ease of setup, troubleshooting and servicing Metallic casing with industrial grade ruggedness |
| Printer driver compatibility | Microsoft® Windows 7/ Windows10 (32 / 64 bits); Windows Server 2003/2008 R2/2012 (32/64 bits) |
| Supported network protocol | TCP/IP (Static IP or DHCP Auto) |
| Acoustics | Sound pressure level less than 60dBA (both operator / bystander position) |

ACCESSORIES & OTHERS

| | |
|-----------------------|---|
| Built-in accessories | Integrated un-winder (with enclosure for paper dust removal) as standard for up to 200 mm (8") OD label roll with 76 mm (3") core. Built-in automatic cutter. |
| Product size | 476 mm x 497 mm x 585 mm (18,7" x 19,6" x 23,0") |
| Weight (printer only) | 35 kg (77 lbs) |
| Warranty | 1 year limited warranty or 5M inches - whichever comes first |

SHIPPED

| | |
|----------------|---|
| Included items | Printer (integrated with un-winder) Printhead and CMYKK ink cartridges are sold separately |
|----------------|---|

Note:

- Barcode PQ is dependent on label media compatibility with the ink.
- Limited warranty does not include consumables, ink supplies and printhead.
- * Windows is a registered trademark of Microsoft Corporation in the United States and other countries.

Printer Overview

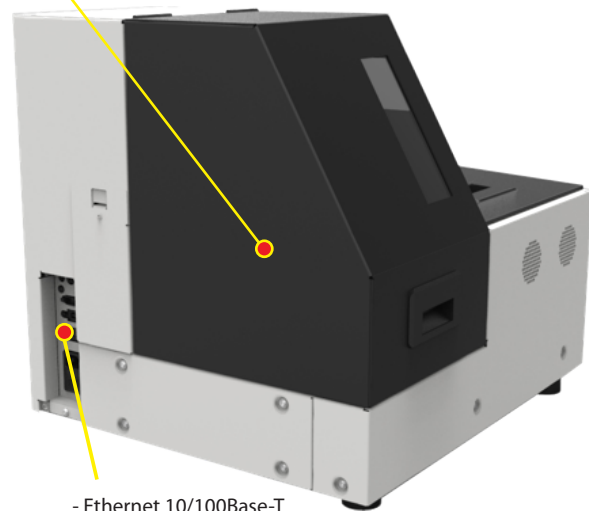
The VP750 supports all major Microsoft Windows based label and graphics design applications like



Large 250 ml ink cartridges

- 215,9 mm (8.5") print width
- Up to 1600 x 1600 dpi
- Supports Roll-Roll, Roll-Cut, Print-Hold & Fan-Fold modes
- Fast Time-to-First Label < 10s
- Automatic cutter
- Remote access via Embedded Web Server

External Un-winder for 200mm (8") OD roll



- Ethernet 10/100Base-T
- GPIO
- USB 2.0
- Power Input

All connection ports are neatly designed and well placed at the back panel

More information at:

Web: <http://www.vipcolor.com>
Email: info@vipcoloreurope.com
Tel.: +34 93 588 3018

Venture Electronics Spain, SL
Pagesia, 22-24 2-J
08191 - Rubí (Barcelona)
SPAIN